



# PERSPECTIVES CORPORATION

## AGES 14-21

### TRANSITIONAL SCHOOL SERVICES

Student specific programming for youth transitioning from high school to working and learning in the community

## AGES 14-21

### EMPLOYMENT SERVICES

Person-centered career preparation for competitive integrated employment

## AGES 21+

### INDEPENDENT LIVING

Equips individuals with the knowledge, skills and resources to live independently

## AGES 21+

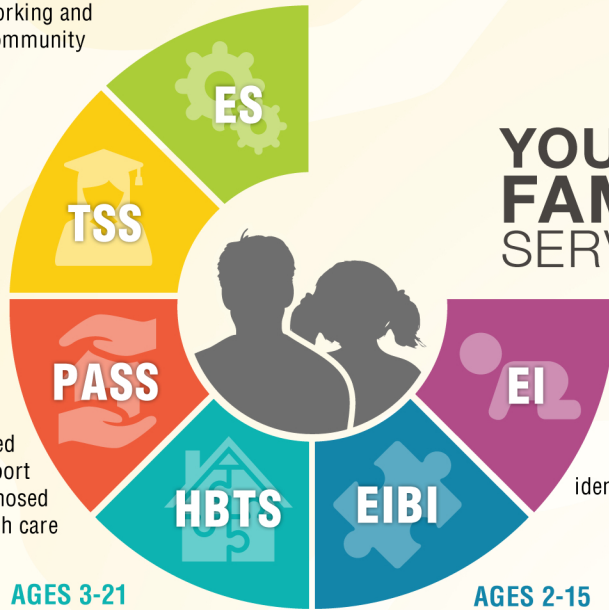
### SHARED LIVING ARRANGEMENTS

Residential option for an individual to reside and receive supports from a contracted community member

## AGES 3-21

### PERSONAL ASSISTANCE SERVICES & SUPPORT

Consumer directed home-based support for children diagnosed with special health care needs



## YOUTH & FAMILY SERVICES

## AGES 0-3

### EARLY INTERVENTION

Specialty services for infants and toddlers with an identified hearing loss

## AGES 3-21

### HOME-BASED THERAPEUTIC SERVICES

Specialized home-based treatment for children diagnosed with special health care needs

## AGES 2-15

### EARLY INTENSIVE BEHAVIORAL INTERVENTION

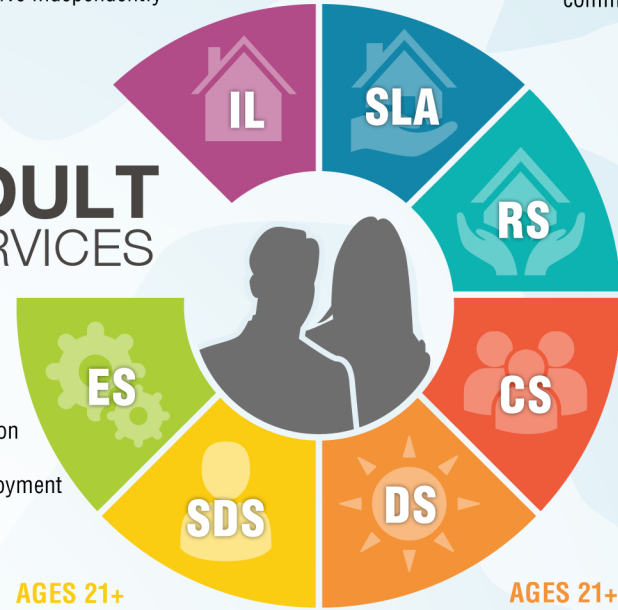
A language-based curriculum utilizing ABA for children diagnosed with Autism Spectrum Disorder

## ADULT SERVICES

## AGES 21+

### EMPLOYMENT SERVICES

Person-centered career preparation for competitive integrated employment



## AGES 21+

### RESIDENTIAL SERVICES

24-hour support in a community-based home

### AGES 21+ COMMUNITY SUPPORTS

Home and community-based supports for individuals living with family

## AGES 21+

### SELF-DIRECTED SERVICES

Individuals and family manage all aspects of services utilizing a person-centered planning process

## AGES 21+

### DAY SERVICES

Community engagement and participation outside of work



## ALL AGES

### DEAF AND HARD-OF-HEARING SERVICES

An array of therapeutic services accessible to individuals who are Deaf or Hard-Of-Hearing