

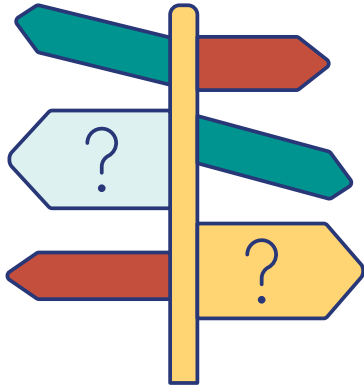
**LINK
WITH**

**YOUR
COMMUNITY**

A guide for
finding
meaningful and
fun activities to
fill your time,
meet new
people, and
help you reach
your goals.



HOW TO USE THIS GUIDE:



Thank you for being here! We hope that this interactive guide will help you find ways to fill your time with meaningful activities, work on your goals, learn new things, practice your hobbies, and meet new people in your community.

This guide is designed to help you find real places, events, and activities you can do in Rhode Island and inspire you to find your own. We have collected some resources and links to help get you started.

Helpful Tips:

- When words are underlined like this, these are links you can click to take you around the guide or to another website with more information.
- If you are viewing the guide in a desktop browser, you can right-click on the links with your mouse, and a window will pop up that says, “Open link in new tab.” This is helpful so you can see the guide and the website at the same time. If not, you may need to click the “back” button to get back to this guidebook.
- You can zoom in and out of a page in this guide using the magnifying glass icon tools on the top or left side of your screen.

To zoom in, select



To zoom out, select



If you have a question about the guide or want to share a resource with us email linkwithus@ripin.org

DISCLAIMER: This guide is for information purposes and is meant to serve as a resource based on publicly available information. The websites, organizations, activities, and events represented in this guide are not sponsored or endorsed by RIPIN. Although RIPIN strives to provide the most current and up-to-date information in this guide, RIPIN cannot guarantee that all website links and internet content are operating and up-to-date.

What Do You Want to Do ?

Click on the text or the red circles to be taken where you want to go.



TIPS AND TRICKS

Accessibility
Transportation
How to find more



**WHAT'S HAPPENING TODAY,
TOMORROW, OR SOON?**



VISIT THE LIBRARY



VISIT A MUSEUM



EXPLORE MY INTERESTS



**FIND PLACES, EVENTS, AND
ACTIVITIES IN MY OWN TOWN OR CITY**

Accessibility Information



If you require accommodations to visit or participate in any of the activities or locations shared in this guide, many locations and events will share this information on their websites.

If not, try contacting them directly by email or phone for more information and ask if they can meet your needs.

Below we share information about some information on popular events and places that clearly share this information and offer many accessibility sensory-friendly opportunities.

[Audubon Nature Center and Aquarium](#)

[Providence Performing Arts Center \(PPAC\)](#)

[Rhode Island Historical Society](#)

[RI State Park Accessibility Information](#)

[Roger Williams Park Zoo](#)

[Trinity Rep Theater](#)

[Go Back](#)
[To Menu](#)

»»» Scroll to the next page for transportation tips...

How do you get around?

➤➤ [Click here for general travel tips and resources](#)



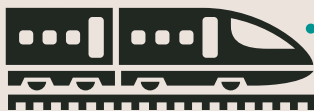
- [RIPTA Bus Schedules](#)
- [RIPTA Riding Tips](#)
- [The Ride Program Information](#)



- [RI Bike Paths](#)
- [RI Bicycle Commuter Guide](#)



- [ADA Accessible Ground Travel](#)
- [Travel Training](#)
- [Transportation Options](#)



- [Providence/Stoughton MBTA Commuter Rail Schedule](#)



- [TF Green Airport Accessibility and Programs](#)
- [Disability Air Travel Tips](#)

➤➤ Scroll to the [next page](#) for more tips and tricks!

[Go Back](#)
[To Menu](#)

HOW CAN I FIND MORE?

Tips and tricks to help you find more beyond this guide

Start with your interests and hobbies

The best way to keep busy and find new friends is to join clubs, groups, and attend events that are based off of your interests and hobbies. This guide gave some ideas about a few, but there are so many more to choose and explore! This page shares a few ways to find more!

Look at community bulletin boards

Many of your favorite places to visit in your neighborhood have bulletin boards where people put up flyers about stuff happening. It's cool because you can find out about events and activities that match your interests without having to search too hard. Maybe there's a local art class you'd enjoy or a fun concert in the park!

Be brave and try something new!

Trying new things keeps life exciting and helps you grow as a person. You grow when you learn new skills, meet new people, and discover more of the world around you. You might like the routine you have, and that's okay, but sometimes our routines need new things to do too!

Social Media and Meetup Groups

When done safely, joining social media and [meetup groups](#) can help you find other people who like what you like. You can talk with people in these groups and you might find a new buddy to explore your interests with.

Friends

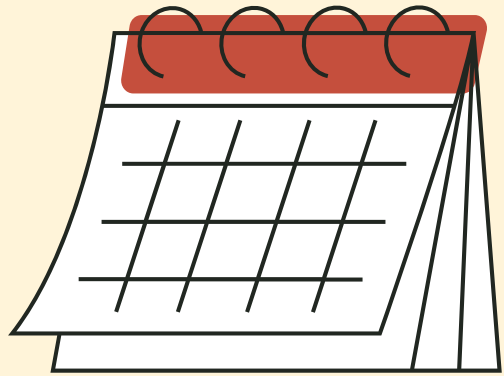
Talk with your current friends and see if they belong to any groups or what they do in their communities. You might find something that interests you, too! Plus, it can be another way to spend time with your friend!

Use Map Apps and Websites!

Map apps can give you directions and transportation options, but did you know it can also help you discover new restaurants, cafes, and places to shop in your community? They can also guide you to parks, museums, and other recreational spots you might not have known about!

[Go Back](#)
[To Menu](#)

**WHAT CAN I DO
RIGHT NOW?
...OR SOON?**



 **EVENTS:** 

[At the Libraries](#)

[State Parks](#)

**Here are some more websites to
check for local events and activities
that are happening soon:**

[Arts Now RI](#)

[Visit Rhode Island](#)

[Beyond the Nest](#)

[Rhode Island Monthly](#)

**Check out the next page for information
on sensory-friendly events and
accessibility information**

[Go Back
To Menu](#)



Where do you look for events?
Email us at linkwithus@ripin.org!



Here is a list of **events** happening at libraries across Rhode Island. This site also lets you search for library events at your local library, on a certain day or time, and more.

LIBRARIES

Not just a place for Books!

Find your local library here.

Aside from events and all the awesome books, movies, music, and other things you can check out and take home with you, libraries in Rhode Island have so much more to offer. You might also find:

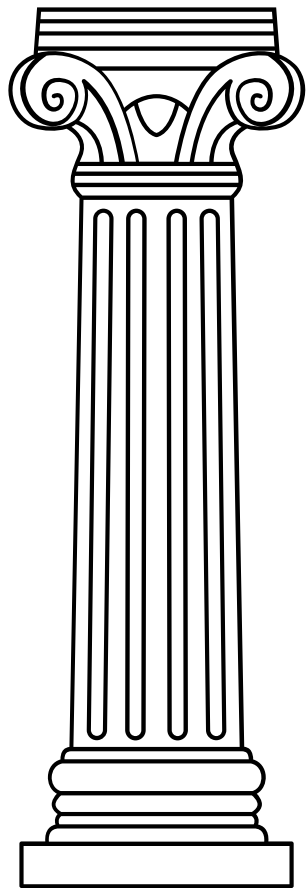
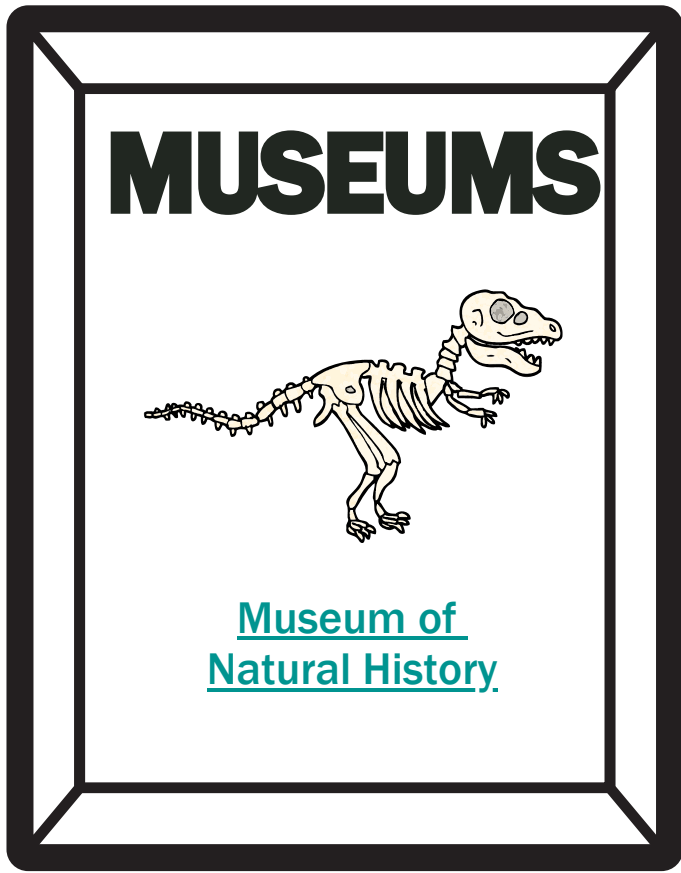
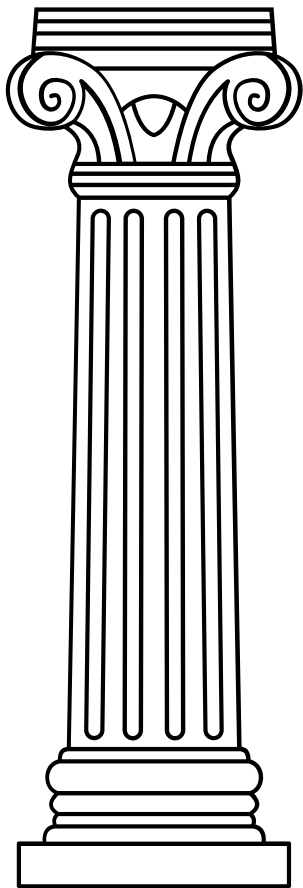
- Community Jigsaw Puzzles
- Free museum passes “library of things”
- “Makerspace” & more!

Did You Know?

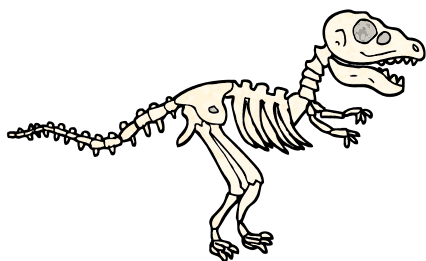
There is also a virtual library with TV shows, movies, music, e-books, and more.



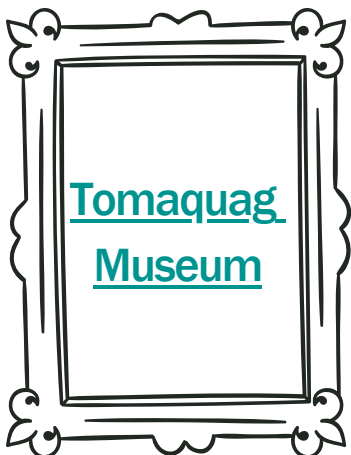
Go Back
To Menu



MUSEUMS



Museum of Natural History



Tomaquag Museum



Newport Car Museum

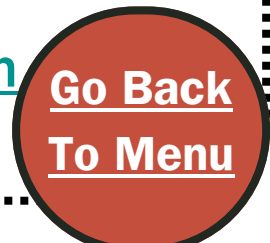


RISD Museum



Whether you like learning about history, art, culture, nature, animals, space, and more, museums have something for everyone!

[Complete List of Museums in RI](#)
[Museums for All: Free or Reduced Admission](#)



[Go Back To Menu](#)



THE ARTS

There are many different ways to make art: Dancing, theater, music, painting, sculpture, drawing, and a whole lot more! So, here are some links with ideas to explore!



- [Arts Now RI](#) (Community Art Events)
- [AS220](#) (Classes, events, and more)
- [The Collaborative](#) (Art Gallery)
- [Dance Studios in RI](#) (Listings)
- [Imago Foundation for the Arts](#) (Events)
- [Jamestown Art Center](#)
- [Newport Art Museum](#)
- [North Kingstown Art Council](#)
- [Outsider Collective](#) (Art Studio, etc.)
- [The Same Thing Project](#) (Songwriting)
- [RISD Museum](#)
- [RI Philharmonic](#) (Music)
- [Warwick Center for the Arts](#)

[Go Back](#)
[To Menu](#)

[Back
to
Interests](#)

MULTI-CULTURAL EVENTS AND ACTIVITIES

[International
House](#)

[Latino Arts](#)

[Festival Net](#)

The links on this page can help you find activities and events that celebrate your own culture or learn about others.



Do you have ideas for more links on this topic?
Email us at linkwithus@ripin.org!

[Go Back
To Menu](#)

[Back
to
Interests](#)

NATURE



PARKS & TRAILS

- [All Trails](#)
- [Audobon Society](#)
- [Norman Bird Sanctuary](#)
- [RI Bike Paths](#)
- [RI Walks](#)
- [Take a Hike](#)
- [State Parks](#)

GARDENING

- [Botanical Center](#)
- [Community Gardens](#)
- [URI Master Gardeners](#)

CLEAN-UPS & MORE

- [Buzzards Bay Coalition](#)
- [ECO RI](#)
- [SAVE THE BAY](#)



Tell us your favorite nature spot!
Email us: linkwithus@ripin.org!

[Go Back
To Menu](#)



SPORTS AND FITNESS



Adaptive Sports

These sports programs are accessible to all different ages and abilities.

[Click here](#) for more.

Dance studios in RI

Dancing is fun, social, and a great way to get fit!

Check out a list of dance studios [here](#).

Special Olympics

Learn how to sign up as an athlete with Special Olympics.

[Click here.](#)

Walking, Biking, Hiking

Find some of the best places to walk and hike with these links:

- [RI Walks](#)
- [Take A Hike](#)
- [Bike Paths in RI](#)

Surfing

You can learn to ride the waves with these two organizations:

- [Surf New England](#)
- [Gnome Surf](#)

YMCA

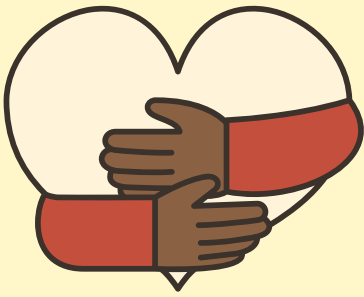
There's a lot you can do at the Y. Swimming, working out, going to exercise classes, and more. [Find your local YMCA here.](#)



We know exercise is good for us but sometimes we don't want to do it. Finding fitness activities you find fun is the way to go!



[Back
to
Interests](#)



&

COMMUNITY SERVICE

Volunteering is a great way to give back to your community, help someone in need, learn new things, meet new people, and try out different types of work experiences.

If you take it seriously and work hard, the people you volunteer with might want to give you references when you're ready or want to apply for a new job! But, that should not be the only reason to volunteer. You want to do it to feel good by making a difference in the world. There are many different ways to serve your community, but this link to the United Way of Rhode Island is a good way to start! The website hosts a calendar and listings of many places and organizations that need volunteers.

[**CLICK FOR A
VOLUNTEER
OPPORTUNITY
CALENDAR**](#)



[Go Back
To Menu](#)



WHERE CAN I GO IN MY OWN COMMUNITY?

Click on your city or town.
You can also click on the
counties.

Kent County

- Coventry
- East Greenwich
- Warwick
- West Greenwich
- West Warwick

Providence County

- Burrillville
- Central Falls
- Cranston
- Cumberland
- East Providence
- Foster
- Glocester
- Johnston
- Lincoln

Bristol County

- Barrington
- Bristol
- Warren

Washington County

“South County”

- Charlestown
- Exeter
- Hopkinton
- Narragansett
- North Kingstown
- Richmond
- South Kingstown
- Westerly

North Providence

North Smithfield

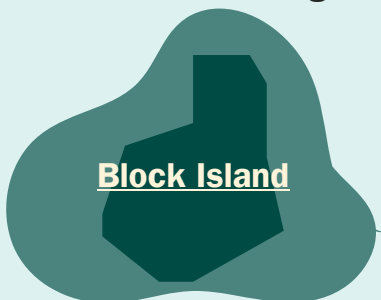
- Pawtucket
- Providence
- Scituate
- Smithfield
- Woonsocket

Newport County

- Jamestown
- Little Compton
- Middletown
- Newport
- Portsmouth
- Tiverton

TIP: Your Town or City’s official website may have an event calendar and other resources and information. Click [here](#) to find yours.

Hint: We love looking at our town’s recreation department’s page.



Block Island



[Go Back](#)
[To Menu](#)



Where do you like to go in your community? Email us: linkwithus@ripin.org!

[Back](#)
[To The](#)
[Map](#)

REGIONAL WEBSITES



Block Island

[New Shoreham Town Website](#)
[Library](#)

Bristol County

Barrington

[Town Website](#)
[Library](#)
[Bay Spring Community Center](#)
[Business and Community Association](#)
[Community Land Trust](#)

Bristol

[Town Website](#)
[Library](#)
[4th of July Events](#)
[Blithewold Mansion](#)
[Claire D. McIntosh Wildlife Refuge and Nature Center and Aquarium](#)

Warren

[Town Website](#)
[Library](#)
[Discover Warren](#)
[Hope and Main](#)
[Frerichs Farm](#)
[The Collaborative \(Art\)](#)



A turkey at the Claire D. McIntosh Wildlife Refuge in Bristol



[Go Back](#)
[To Menu](#)

[Back](#)
[To The](#)
[Map](#)

Kent County

Coventry

[Library](#)

[Town Event Listings](#)

[Newspaper Event List](#)

East Greenwich

[Town Website](#)

[Library](#)

[Dance Studio Events](#)

[Newspaper](#)

Warwick

[City Website](#)

[Library](#)

[Chamber of Commerce Events](#)

[Mall Events](#)

[Newspaper](#)

[Visit Warwick Events](#)

[Warwick Center for the Arts](#)

West Greenwich

[Town Website](#)

[Library](#)

West Warwick

[Town Website](#)

[Library](#)

[Senior Center](#)



The famous Rocky Point Amusement Park is now a state park you can visit in Warwick!

I ♥ RI

[Go Back](#)
[To Menu](#)

[Back](#)
[To The](#)
[Map](#)

Newport County

Jamestown

[Town Website](#)

[Library](#)

[Chamber of Commerce Events](#)

[Jamestown Art Center](#)

Little Compton

[Town Website](#)

[Library](#)

[Community Center](#)

[Save Buzzards Bay](#)

[Wellness Center](#)

Middletown

[Town Website](#)

[Library](#)

[Norman Bird Sanctuary](#)

Newport

[City Website](#)

[Library](#)

[Art Museum](#)

[Discover Newport-Things to Do](#)

[Discover Newport-Events](#)

[Car Museum](#)

[Mansions](#)

[Newport Life Events](#)

[Newport This Week](#)

[Newspaper](#)

Portsmouth

[Town Website](#)

[Library](#)

[Events and Attractions](#)

Tiverton

[Town Website](#)

[Library](#)

[Farmers Markets](#)

[Recreation Department](#)



Summer sunset in Tiverton, RI



[Go Back](#)
[To Menu](#)

[Back](#)
[To The](#)
[Map](#)

Providence County

Burrillville

[Town Website](#)

[Library](#)

Central Falls

[City Website](#)

[Library](#)

Cranston

[City Website](#)

[Library](#)

[Garden City Events](#)

[Go Providence Events in Cranston](#)

Cumberland

[Town Website](#)

[Library](#)

[Valley Breeze](#)

East Providence

[City Website](#)

[Library](#)

[Crescent Park Events](#)

[Newspaper](#)

[RI Philharmonic School Events](#)

Foster

[Town Website](#)

[Library](#)

Glocester

[Town Website](#)

[Library](#)

[Annual Events](#)

[Business Association Calendar](#)

[Tour Blackstone Events](#)

Johnston

[Town Website](#)

[Library](#)

Lincoln

[Town Website](#)

[Library](#)

[Valley Breeze](#)



*Lincoln Woods
State Park in the Fall*

There are two
pages
for
Providence County!



[Go Back](#)
[To Menu](#)

[Back
To The
Map](#)

Providence County (Continued)

North Providence

[Town Website](#)

[Library](#)

North Smithfield

[Town Website](#)

[Library](#)

Pawtucket

[City Website](#)

[Library](#)

[Experience Pawtucket Happenings](#)

[Festivals](#)

[The Outsider Collective](#)

Providence

[City Website](#)

[Library](#)

[AS220](#)

[Botanical Center](#)

[Downtown Providence Events](#)

[Go Providence](#)

[Roger Williams Park Conservancy](#)

Scituate

[Town Website](#)

[Library](#)

Smithfield

[Town Website](#)

[Library](#)

Woonsocket

[City Website](#)

[Library](#)

[Newspaper](#)

[Tour Blackstone](#)



The Rhode Island State House in Providence



[Go Back
To Menu](#)

[Back](#)
[To The](#)
[Map](#)

Washington ("South") County

Charlestown

[Town Website](#)

[Library](#)

[Citizens Alliance](#)

[Fantastic Umbrella Factory](#)

[Recreational Information](#)



A hen getting water at the Fantastic Umbrella Factory in Charlestown, RI

Exeter

[Town Website](#)

[Library](#)

[Tomaquag Museum](#)

Hopkinton

[Town Website](#)

[Library](#)

[Newspaper](#)

Narragansett

[Town Website](#)

[Library](#)

[Save the Bay- Family Fun](#)

[South County Museum](#)

[Surfing Program](#)

[The Towers Music Events](#)

Richmond

[Town Website](#)

[Library](#)

South Kingstown

[Town Website](#)

[Library](#)

[The Village at South County Commons](#)

Westerly

[Town Website](#)

[Library](#)

[Newspaper](#)

North Kingstown

[Town Website](#)

[Library](#)

[Arts Council Events](#)

[URI Master Gardeners](#)



[Go Back](#)
[To Menu](#)

RIPIN



300 Jefferson Blvd
Suite 300
Warwick, RI 02888
www.ripin.org
(401) 270-0101

THE END (FOR NOW!)

Do you have a place or activity
you enjoy that you'd like to
share with us?

We want to hear from you!

Email us at

linkwithus@ripin.org

Stay linked with RIPIN:



PERSONAL SUPPORT BUILT ON PERSONAL EXPERIENCE