



ALLIANCE

FOR COMMUNITY HEALTH WORKER

EMPLOYERS

Navigating Rhode Island's Standing Order for CHWs

This tool assists in navigating this [Standing Order](#) and seeking reimbursement for CHW service through Rhode Island Medicaid.

Rationale

This Standing Order will meet the Executive Office of Health and Human Services (EOHHS) “**recommendation requirement**” necessary to seek Rhode Island Medicaid reimbursement for CHW services. This is not the same as a referral because the licensed practitioner does not need to refer the patient to a specific CHW provider.

Goals

- To reduce the barriers associated with access to CHW services.
- To build an individual's capacity to navigate health and social services and self-manage chronic conditions through the delivery of Community Health Worker (CHW) services.

Qualifications for CHW Medicaid Reimbursable Services:

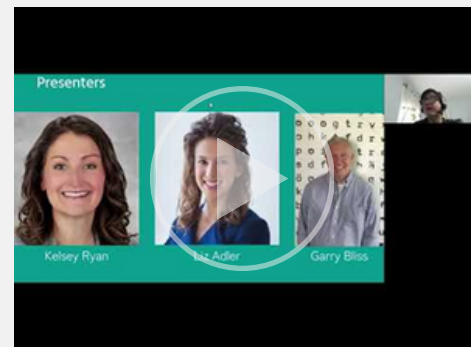
- ✓ CHW must possess a **valid CHW certification** or working toward certification within 18 months through the [Rhode Island Certification Board](#).
- ✓ Independent CHW and Organizations billing for CHW Services **must be enrolled** as a [CHW Provider](#) and a [Trading Partner](#) to seek reimbursement for services through Rhode Island Medicaid.

Eligibility

Reimbursable CHW services must be determined to be medically necessary for beneficiaries with:

- ✓ one or more chronic health (including behavioral health) conditions,
- ✓ who are at risk for a chronic health condition,
- ✓ and/or who face barriers to meeting their health or health-related social needs.

Maximizing Your CHW Medicaid Billing with Standing Orders



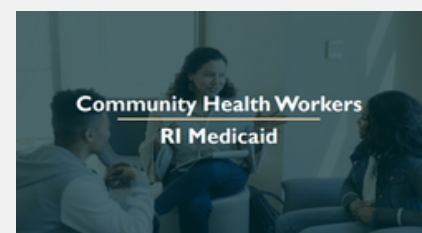
Examples of Reimbursable CHW Services

1. Health system navigation/resource coordination
2. Health promotion and coaching
3. Health education training
4. Care planning

Verification of Eligibility:

- The CHW must first verify the beneficiary's Rhode Island Medicaid eligibility.
- The CHW must also verify the member's eligibility on each date of service.
- Eligibility information is located on the Health Care Portal and is available 24 hours per day, seven days per week.

PowerPoint: CHWs RI Medicaid



Additional Resources

- [EOHHS Community Health Workers Provider Manual](#)
- [Rhode Island Medicaid Healthcare Portal Quick Reference Guide: Verification of Eligibility](#)